

Prepared for:
Earth Buddy Pet

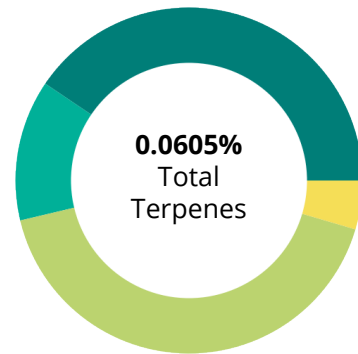
425 South Bowen St. #4
Longmont, CO USA 80501

Org. MCT Infused w/ Full Spec Hemp Oil - 500 mg/oz

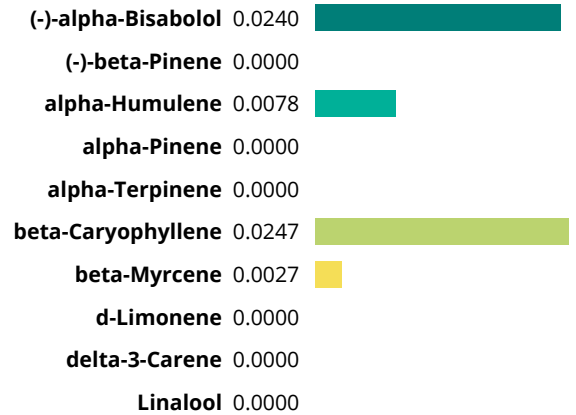
Batch ID or Lot Number: 2127-RE-EBB	Test: Terpenes	Reported: 25Aug2022	USDA License: NA
Matrix: Concentrate	Test ID: T000219080	Started: 24Aug2022	Sampler ID: NA
	Method(s): TM22 (GC-MS)	Received: 23Aug2022	Status: NA

Terpenes

	%(w/w)	(mg/g)
(-)-alpha-Bisabolol	0.0240	0.240
(-)-beta-Pinene	0.0000	0.0000
(-)-Caryophyllene Oxide	0.0000	0.0000
(-)-Isopulegol	0.0000	0.0000
alpha-Humulene	0.0078	0.078
alpha-Pinene	0.0000	0.0000
alpha-Terpinene	0.0000	0.0000
beta-Caryophyllene	0.0247	0.247
beta-Myrcene	0.0027	0.027
beta-Ocimene	0.0000	0.0000
Camphene	0.0000	0.0000
cis-Nerolidol	0.0000	0.0000
d-Limonene	0.0000	0.0000
delta-3-Carene	0.0000	0.0000
Eucalyptol	0.0000	0.0000
gamma-Terpinene	0.0000	0.0000
Geraniol	0.0000	0.0000
Linalool	0.0000	0.0000
Ocimene	0.0000	0.0000
p-Cymene	0.0000	0.0000
Terpinolene	0.0000	0.0000
trans-Nerolidol	0.0013	0.013
	0.0605	0.6050



PREDOMINANT TERPENES



Notes

Final Approval



Jacob Miller
25Aug2022
03:00:00 PM MDT

PREPARED BY / DATE



Daniel Weidensaul
25Aug2022
03:03:00 PM MDT

APPROVED BY / DATE



<https://results.botanacor.com/api/v1/coas/uuid/cf560cee-49d1-484b-939e-5afd1d91bd8a>

Testing results are based solely upon the sample submitted to SC Laboratories, Inc., in the condition it was received. SC Laboratories, Inc., warrants that all analytical work is conducted professionally in accordance with all applicable standard laboratory practices using validated methods. Data was generated using an unbroken chain of comparison to NIST traceable Reference Standards and Certified Reference Materials. This report may not be reproduced, except in full, without the written approval of SC Laboratories, Inc. ISO/IEC 17025:2017 Accredited by A2LA.



Cell #4329.02
cf560cee49d1484b939e5afd1d91bd8a.1